

# Nebraska - eForms

## Administration & User Accounts

- 1) Use SQL Server Management Studio to restore SQL Server backup files for your state on your web server.
- 2) If you downloaded the zip file please unzip it and extract the RbdmsWinSetup.msi to either your desktop or another directory you will have access to.
- 3) Execute the RbdmsWinSetup.msi.
- 4) Copy the eForm\_connectionString.config and eForm\_userSettings.config from the training DVD to the configs directory created in Step 2 (C:\Program Files\GWPC\RbdmsWinAdmin\configs).
- 5) Copy the RbdmsWin.exe.config from the training DVD to the application root directory created in Step 2 (C:\Program Files\GWPC\RbdmsWinAdmin)
- 6) Open the RbdmsWinAdmin application.
- 7) Choose "Forms>Configuration Options" from the menu and adjust the database settings to reflect your database and server names. Do not adjust any of the settings on the settings tab or you will have to redo Step 4.

The screenshot shows the 'RBDMS Administration - eForm' application window. The 'Configuration' tab is active, and the 'Database Connection' sub-tab is selected. The window contains the following elements:

- Menu and Security** and **Configuration** tabs at the top.
- Select Config**, **Database Connection**, and **Settings** sub-tabs.
- A message box: "Please check the database connection properties below. If necessary, modify the properties and then click: 'Save Database Connection'".
- 1. Select connection to edit.** A list box containing "RBDMS", "Security", and "DMZ", with "RBDMS" selected.
- 2. Connection Settings** section with the following fields:
  - Integrated Security**
  - User ID**: sa
  - Password**: [masked with asterisks]
  - Server Name**: PE2970WS\SQLEXPRESS
  - Database Name**: NE\_RBDMS
- Three buttons at the bottom: **Save Database Connection**, **Test Database Connection**, and **Build RBDMS Filter Tables**.
- A status bar at the bottom: **Config file: C:\Program Files\GWPC\RbdmsWinAdmin**

- 8) Close RbdmsWinAdmin.
- 9) Open the eForm\_userSettings.config in a text editor (I prefer Visual Studio because it will color code settings)
- 10) Adjust the setting SelectOperator to contain a valid SQL query for your state's RBDMS. This query should return a valid list of active operators for your state. The query must return an operator number (as PKey) and operator name ( as EntityName) pairing from the query. The example below shows the query for a "classic" database structure. The database connection used in RbdmsWinAdmin to run this query is the RBDMS connection.

```
<RbdmsWin.My.MySettings>
  <setting name="MainMDILocation" serializeAs="String">
    <value>0, 0</value>
  </setting>
  <setting name="MainMDISize" serializeAs="String">
    <value>1550, 850</value>
  </setting>
  <setting name="CommandTimeout" serializeAs="String">
    <value>180</value>
  </setting>
  <setting name="GisViewer" serializeAs="String">
    <value>InternetViewer</value>
  </setting>
  <setting name="Inspector" serializeAs="String">
    <value>UNK</value>
  </setting>
  <setting name="KeyType" serializeAs="String">
    <value>Integer</value>
  </setting>
  <setting name="LastWhere" serializeAs="String">
    <value />
  </setting>
  <setting name="LocLayer" serializeAs="String">
    <value>RBDMS Wells</value>
  </setting>
  <setting name="ProjectType" serializeAs="String">
    <value>RBDMS</value>
  </setting>
  <setting name="StateName" serializeAs="String">
    <value>Nebraska</value>
  </setting>
  <setting name="WebDirectory" serializeAs="String">
    <value />
  </setting>
  <setting name="AppDirectory" serializeAs="String">
    <value />
  </setting>
  <setting name="AllowDomainLogin" serializeAs="String">
    <value>True</value>
  </setting>
  <setting name="AllowFormLogin" serializeAs="String">
    <value>True</value>
  </setting>
  <setting name="RecordCount" serializeAs="String">
    <value>100</value>
  </setting>
```

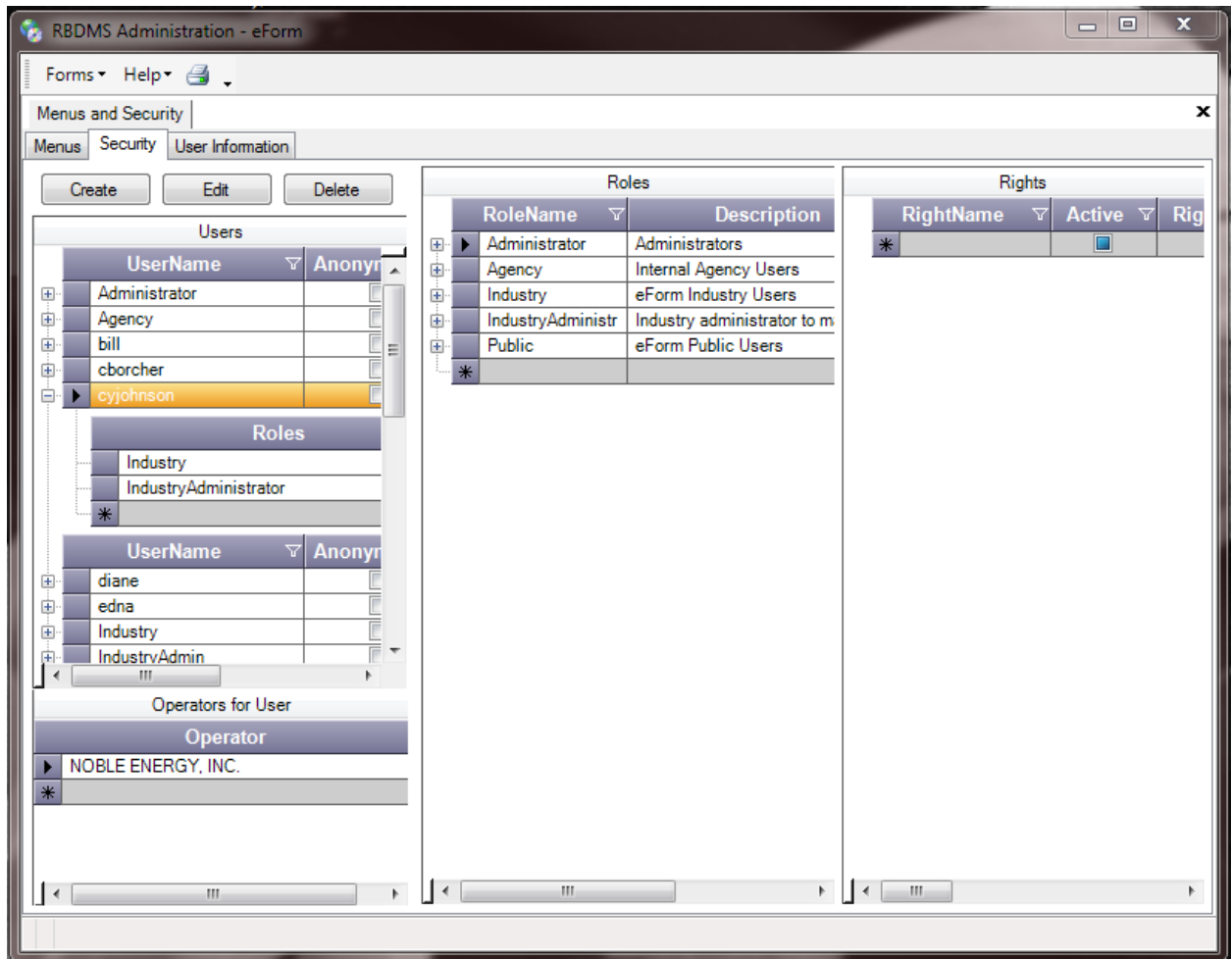
```

<setting name="GisUrl" serializeAs="String">
  <value>http://www.nogcc.ne.gov/NOGCCOnlineGIS/NOGCCOnline.aspx</value>
</setting>
<setting name="GisDetachedConfig" serializeAs="String">
  <value>MSServer.xml</value>
</setting>
<setting name="ReportPath" serializeAs="String">
  <value>C:\Projects\eForms
Projects\eFormsNE_V1\eForms.Web\Reports</value>
</setting>
<setting name="ApplicationName" serializeAs="String">
  <value>eForm</value>
</setting>
<setting name="SelectOperator" serializeAs="String">
  <value>SELECT CAST(CoNo AS Int) AS PKey, CoName AS EntityName FROM
tblRefCompany WHERE (Stat='A' AND Oper=1) ORDER BY EntityName</value>
</setting>
<setting name="DoNotEncryptConnectionStrings" serializeAs="String">
  <value>True</value>
</setting>
</RbdmsWin.My.MySettings>

```

11) Reopen RbdmsWinAdmin.

12) Select the Security tab on the Menus and Security screen (Forms>Menus and Security).



13) Add users by clicking on the create user button.

The screenshot shows the 'RBDMS Administration - eForm' application window. The 'Menus and Security' section is active, with the 'User Information' tab selected. On the left, there are input fields for 'User Name', 'eMail', 'Password', 'Password Confirm', 'Password Question', and 'Password Answer'. There is also a checked 'Is Approved' checkbox and 'Create User' and 'Cancel' buttons. The 'Roles' table has the following data:

RoleName	Description
Administrator	Administrators
Agency	Internal Agency Users
Industry	eForm Industry Users
IndustryAdminstr	Industry administrator to m
Public	eForm Public Users
*	

The 'Rights' table is currently empty.

Required information for eForms is User Name, eMail and Password. The Password Question and Password Answer are optional and are not used in the eForms application. A valid eMail must be entered for the user to receive notifications from the web site. To finish adding the user click the Create User button. This saves the user information into the RbdmsSecurity database.

- 14) Assign roles to the user by dragging a role from the Roles listing to the user. Industry users must be assigned an Industry role to be able to edit and submit forms from the web site. Industry users must also be assigned one or more operators from the Operators for User combo box located below the Users list. Optionally Industry users can be assigned the role IndustryAdministrator. This will allow that user to use the web site to create and assign additional users for an operator.
- 15) Internal agency users must be assigned the Agency role. This will allow them to review and revise forms submitted by Industry users. At least agency one user must be assigned the Administrator Role in addition to the Agency role. This user will be responsible for overall administration and forms creation duties.
- 16) Do not delete the following users from the list of users – Administrator, Agency, Industry, IndustryAdmin and Public. You can change the password for these users but **do not** delete them.